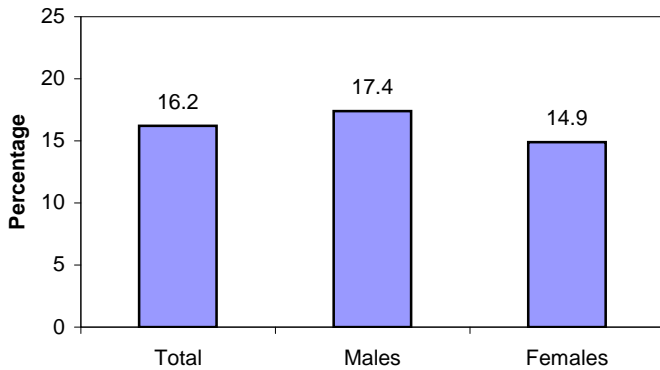


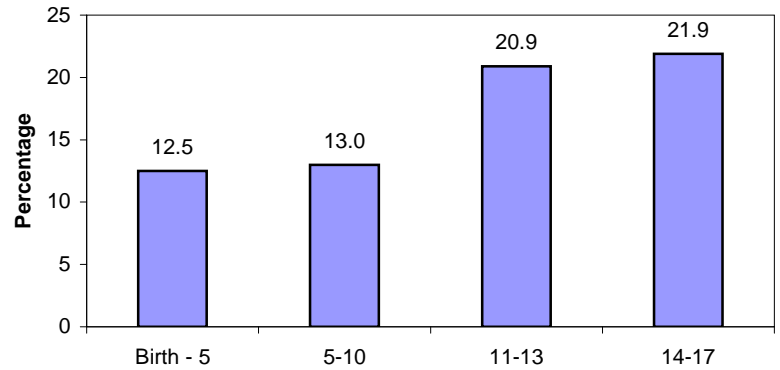
SURVEILLANCE UPDATE

Child injuries requiring medical attention: 2010 Child Health Assessment & Monitoring Program (CHAMP)

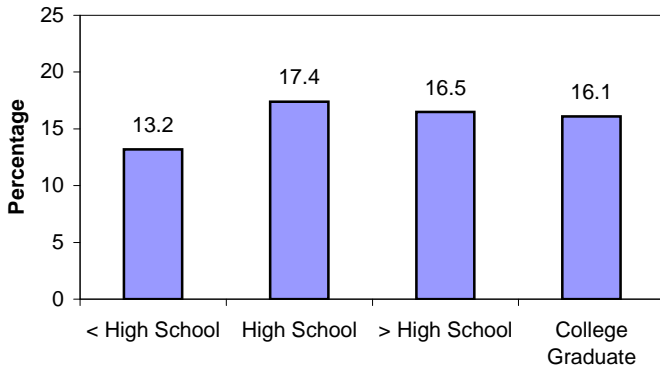
Percentage of N.C. parents who reported their child having injury requiring medical attention in the past year, by child gender: N.C. CHAMP 2010



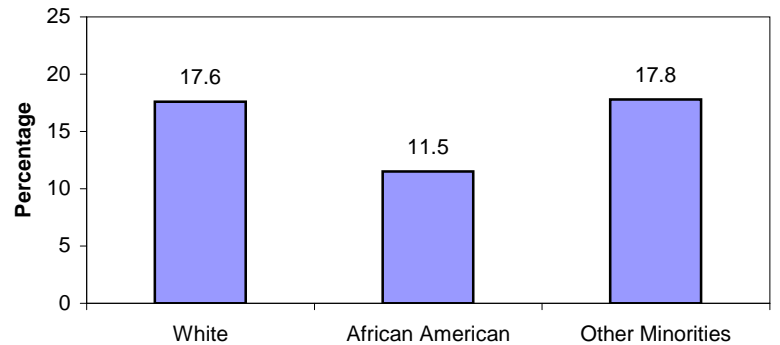
Percentage of N.C. parents who reported their child having injury requiring medical attention in the past year, by child age group: N.C. CHAMP 2010



Percentage of N.C. parents who reported their child having injury requiring medical attention in the past year, by parent educational attainment: N.C. CHAMP 2010



Percentage of N.C. parents who reported their child having injury requiring medical attention in the past year, by child race/ethnicity: N.C. CHAMP 2010



The North Carolina Child Health Assessment and Monitoring Program (NC CHAMP) is a surveillance system that collects information about the health characteristics of children from age 0 to 17 years. NC CHAMP is a follow-up survey of the Behavioral Risk Factor Surveillance System (BRFSS) telephone survey of adults, ages 18 and older. All adult respondents with children living in their household are invited to participate in the CHAMP survey. One child is randomly selected from the household and the adult most knowledgeable about the health of the selected child is interviewed in a follow-up survey. This surveillance update includes data collected in 2010 on 1,994 parental surveys of children ages 0 to 17 years. Results presented here are for parents who reported that during the past 12 months, their child had injury requiring medical attention. Percentages are weighted to population characteristics. For further information about NC CHAMP, including specific data on 95 percent confidence intervals, please visit www.schs.state.nc.us/SCHS/champ or contact CHAMPstaff@dhhs.nc.gov.